

WEpods - last mile solution



Overview

- What is WEpods?
- Partners
- Technology
- Future

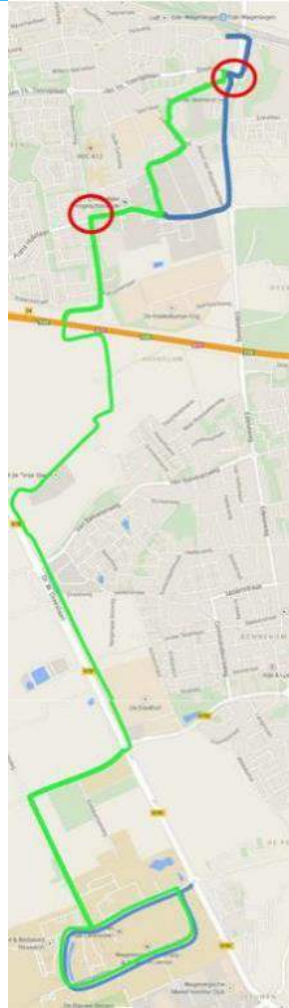


What is WEpods

- Autonomous shuttles
- Urbanized environments
- Fixed tracks
- Low speeds (< 25 km/h for now)

What is WEpods

- Self-driving last mile shuttles on public roads
- Developed in only <2 years with small team, small budget
- Large track (11km)
- Low speeds, but difficult situations!
- Financed by Dutch government
- To improve quality of life





WEpods partners

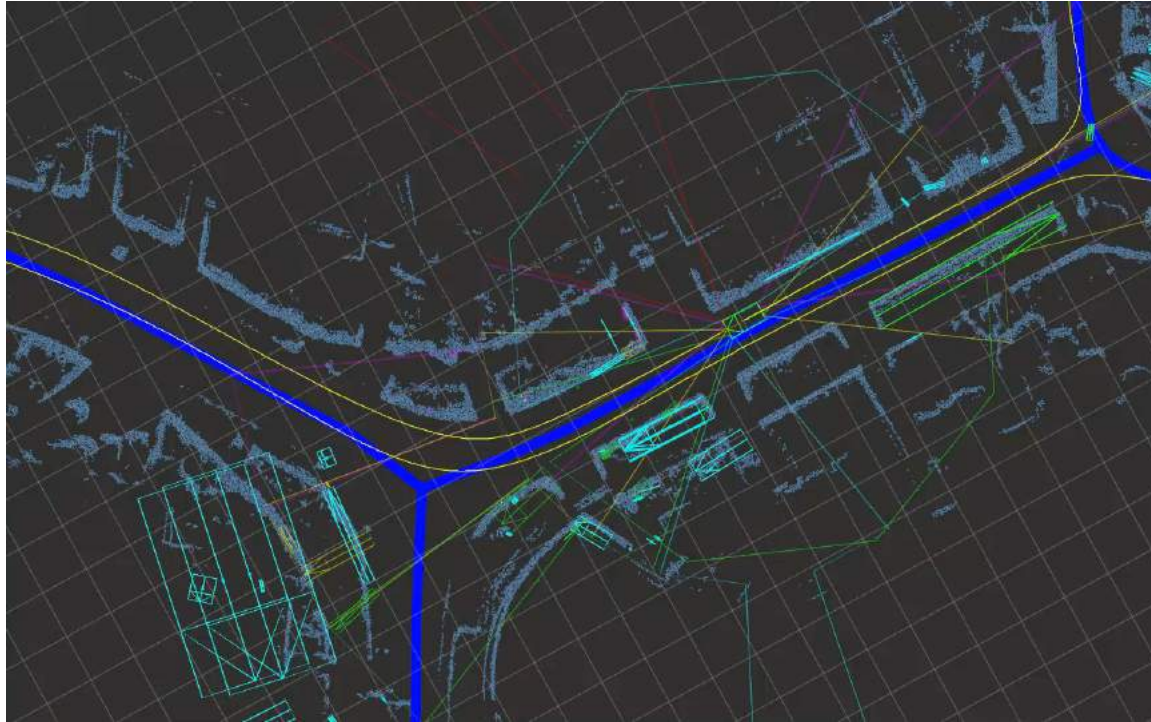
- Exploring regulations with authorities
- Great contacts within the industry



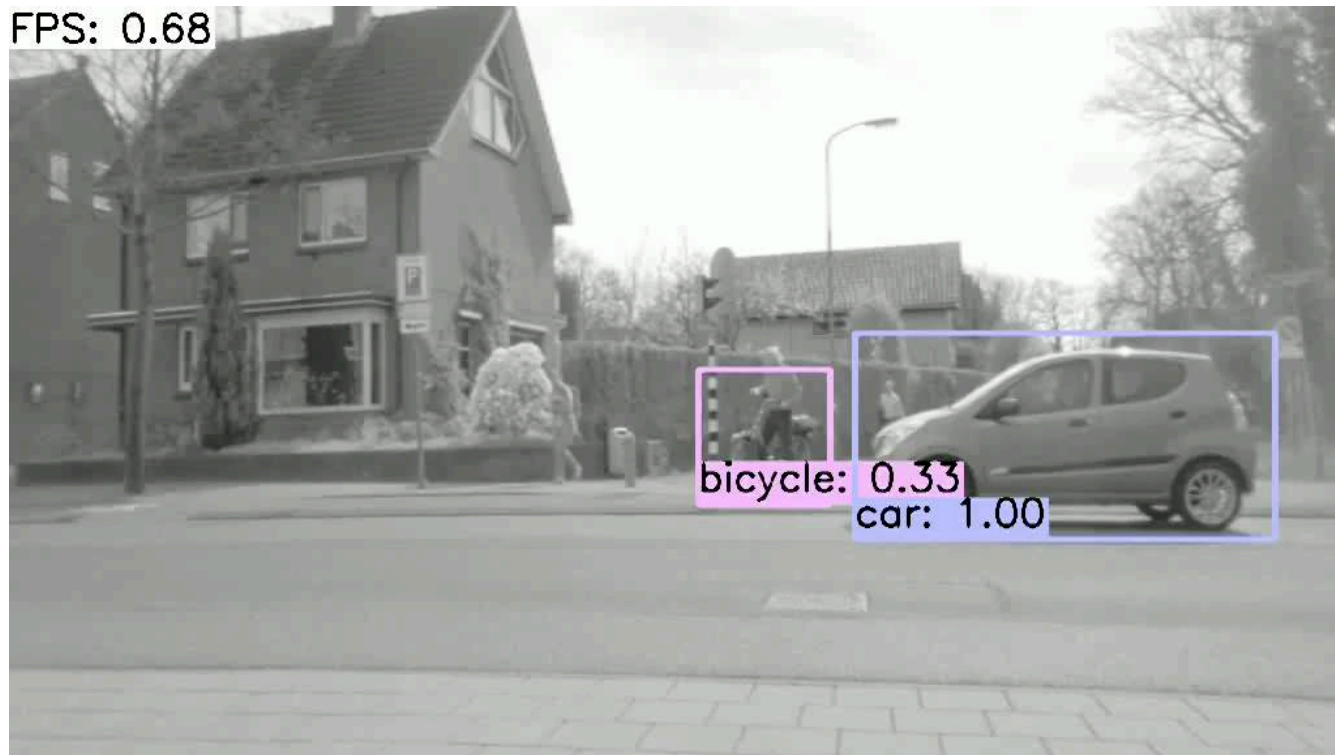
WEpods Technology

- Localization, Path planning, Objects tracking, Sensor fusion, Situational awareness
- We do the processing, sensors, software, etc.
- But also: Diagnostics, safety checks, sensor data logging (localization, radar, camera, LIDAR), infotainment, control room, reservation system, end-user app.

Technology - Fusion of Lidar, Radar, Camera



Technology - Object Classification and Tracking



Technology - Lane recognition in rural areas



Technology - Path Planning, Collision Avoidance





What makes WEpods unique?

Two approaches exist:

1. Highway -> City: consumer cars & platooning
 - Audi, Tesla, Volvo, Daimler, etc.
 - DAF, Scania, etc.
2. City -> Highway: People movers & taxi
 - Uber, Baidu, nuTonomy, Google
 - Easymile, Olli, WEpods

People movers are the fastest way to commercialization of fully autonomous driving



What makes WEpods unique?



WEpods future



Wepods Future

- 3 year Interreg project (D,NL)
 - Extend WEpods with learning to make complex decisions
 - Build a new platform (16 persons, 50KM/h, no steward)
 - Harmonize rules and Regulations
 - Tracks at:
 - Wageningen & Delft (NL)
 - Airport Weeze(D)
 - Aachen-Vaals (D-NL)
- Metropole Region The Hague - Rotterdam: potentially 7 tracks
- International projects (Tata India, Singapore, China)

Questions?